



MNSTACKER



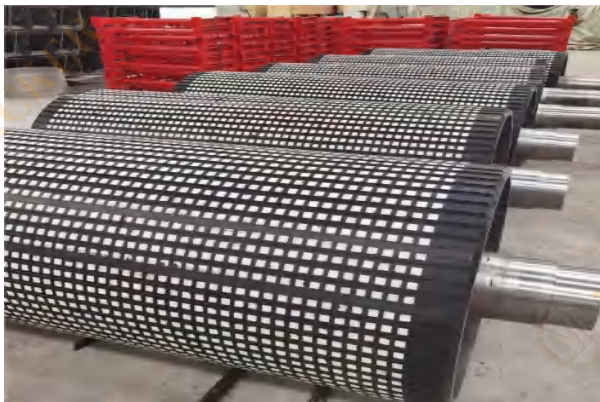
Belt Conveyor Pulley

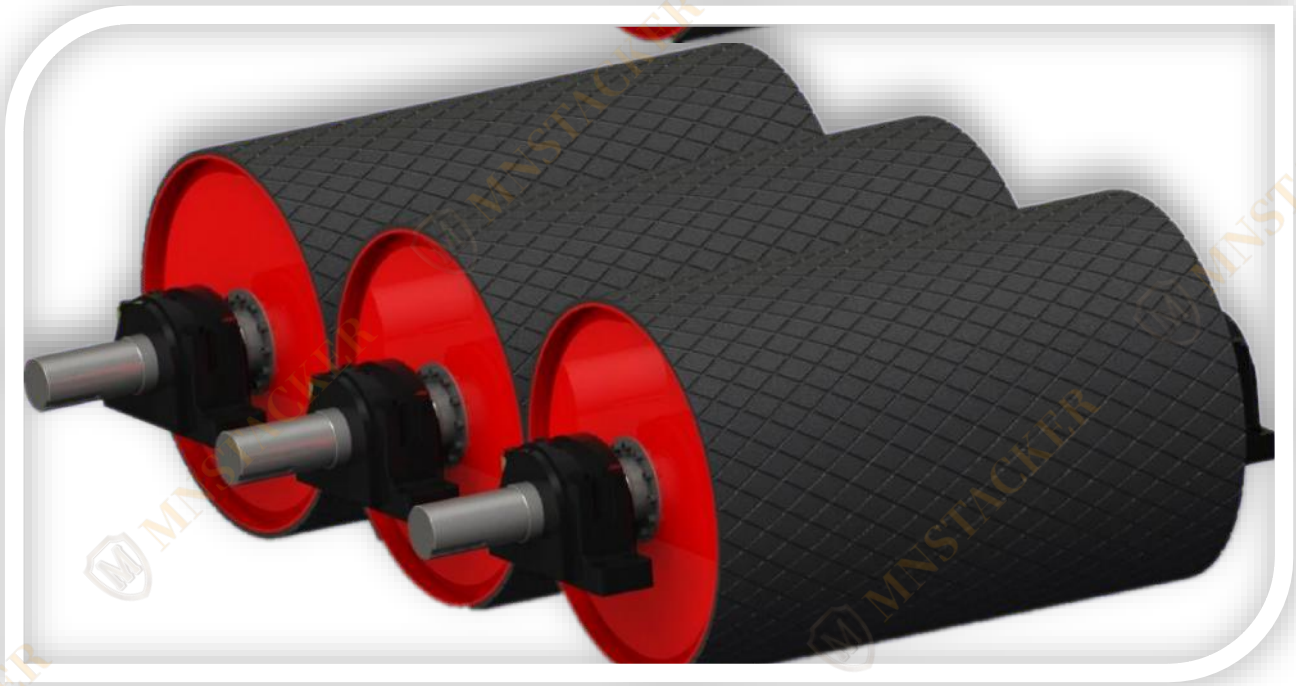
Website: www.mnstacker.com Email: info@mnstacker.com

WhatsApp: +8618916089629

Catalog

1.1 Introduction.....	4
1.2 Drive Pulley	6
1.3 Non-drive Pulley	12





Conveyor Pulleys

The conveyor drum is one of the important components of a belt conveyor, and its function mainly includes three aspects: supporting the rotation of the conveyor belt, transmitting driving power to the conveyor belt, and adjusting the position of the conveyor belt.

According to the function of the drum in the belt conveyor, it can be divided into two categories: drive drum pulley and Non-drive pulley.



Diamond Profile Rubber lagged pulleys.

Diamond grooved lagging features a pattern of diamond-shaped grooves on the lagging surface. This design improves traction and helps to channel water and debris away from the pulley, preventing slippage.

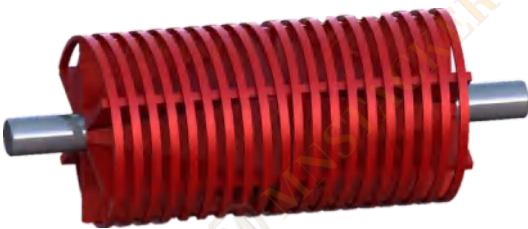


Non-lagged Conveyor Pulley



Ceramics Rubber Lagged Pulley

Ceramic lagging incorporates ceramic tiles embedded in a rubber matrix. This combination enhances wear resistance and provides additional grip, making it suitable for applications involving abrasive materials.



Spiral Wing Pulley

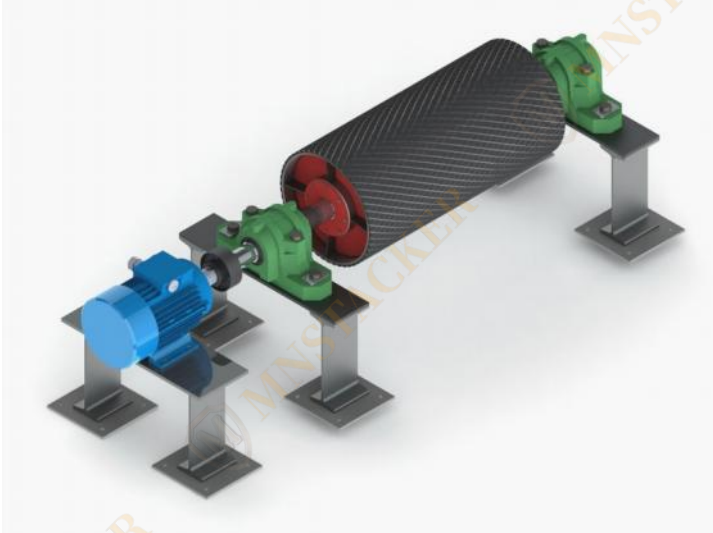
Available in crow spiral wing pulleys are formed by winding flat bar spirally from the center of a wing pulley to the outside ends. This continuous belt contact design eliminates excessive noise and vibration, while still providing a cleaning effect and allowing a path for debris to escape rather than being trapped between the pulley and belt. n or Flat Face.



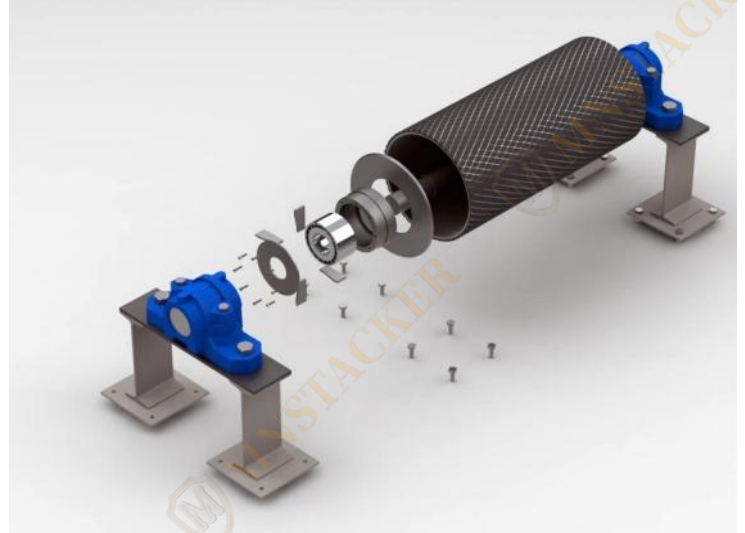
Winged Pulley

Mine duty and quarry duty and heavy duty pulleys provide effective self-cleaning action reducing material build-up. The duty construction reduces the possibility of metal fatigue and enhances the dependability of the pulley. Ideally suited for harsh application and abrasive conditions.

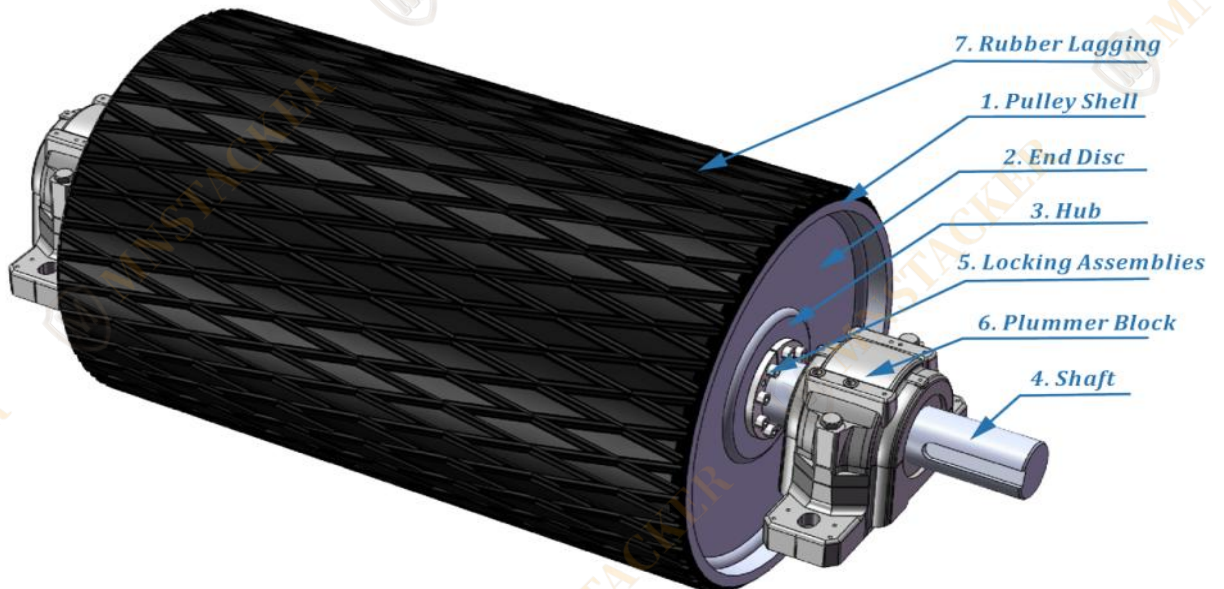
Drum Pulley Structure



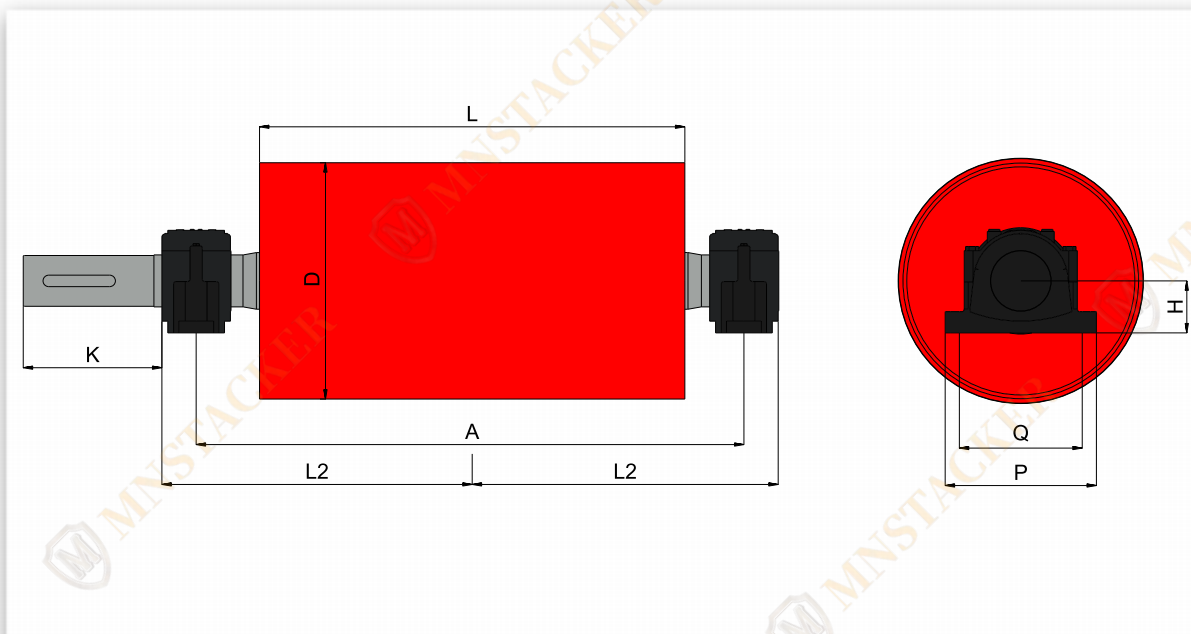
Drive Pulley



Non-drive Pulley



1.2 Drive Pulley



Belt Width	Dia.	Allowable Torque	Allowed combined force	A	L	L2	K	Q	P	H	
		KN · m	KN								
400	250	0.63	15	750	500	445	110	260	320	90	
		0.63	12				110	260	320	90	
	400	1.0	20			450	110	280	340	100	
		1.0	15			445	110	260	320	90	
		1.6	24			450	110	280	340	100	
500	250	0.63	15	850	600	495	110	260	320	90	
		0.63	12				110	260	320	90	
	315	1.0	20			495	110	280	340	100	
		400	1.25			20	495	110	260	320	90
			2.0			30	495	110	280	340	100
	500	1.6	30			495	110	280	340	100	
			2.7			49	495	140	350	410	120
650	315	1.25	25	1000	750	570	110	260	320	90	
		1.25	25				110	260	320	90	
	400	2.0	35			570	110	280	340	100	
		500	3.5			40	570	140	350	410	120
			6.3			59	590	170	380	460	135
	630	4.1	40			570	140	350	410	120	
		7.3	80			590	170	380	460	135	
800	315	1.25	25	1300	950	720	110	260	320	90	
		1.25	20				110	260	320	90	
	400	2	30			720	110	280	340	100	
		500	2.5			720	140	350	410	120	

Belt Width	Dia.	Allowable Torque	Allowed combined force	A	L	L2	K	Q	P	H
		KN · m	KN							
800	500	4.1	40	1300	950	740	170	380	460	135
	630	6	50			740	170	380	460	135
		12	80			740	210	440	530	155
		20	100			750	250	480	570	170
		7	50			740	170	380	460	135
	800	12	80			740	210	440	530	155
		20	110	750		250	480	570	170	
		32	160	800		250	520	640	200	
		12	80	740		210	440	530	155	
	1000	20	120	750		250	480	570	170	
		32	190	800		250	520	640	200	
		40	240	870		300	570	700	220	
		52	310	870		350	640	780	240	
		66	400	895		350	720	880	270	
		40	270	870		350	640	780	240	
	1250	66	320	925		350	750	900	290	
		80	450	925		410	750	900	290	
		120	520	925		410	840	1000	310	
400		2.5	30	1500	1150	820	140	350	410	120
500	3.5	45	820			140	350	410	120	
	6.3	75	840			170	380	460	135	
630	6	40	840			170	380	460	135	
	12	73	840			210	440	530	155	
800	12	73	840			210	440	530	155	
	20	110	850			250	480	570	170	
	27	160	900			250	520	640	200	
	40	190	910			300	570	700	220	
1000	52	320	995			350	640	780	240	
	12	80	840			210	440	530	155	
	20	110	850			250	480	570	170	
	27	170	900			250	520	640	200	
	40	210	910			300	570	700	220	
	52	330	995			350	640	780	240	
1250	66	400	1000			350	720	880	270	
	52	320	1000			350	720	880	270	
	66	450	1025			350	750	900	290	
	80	520	1025	410	750	900	290			
1400	120	660	1025	410	840	1000	310			
	66	450	1000	350	750	900	290			
	120	520	1025	410	840	1000	310			
	160	660	1025	470	940	1150	330			

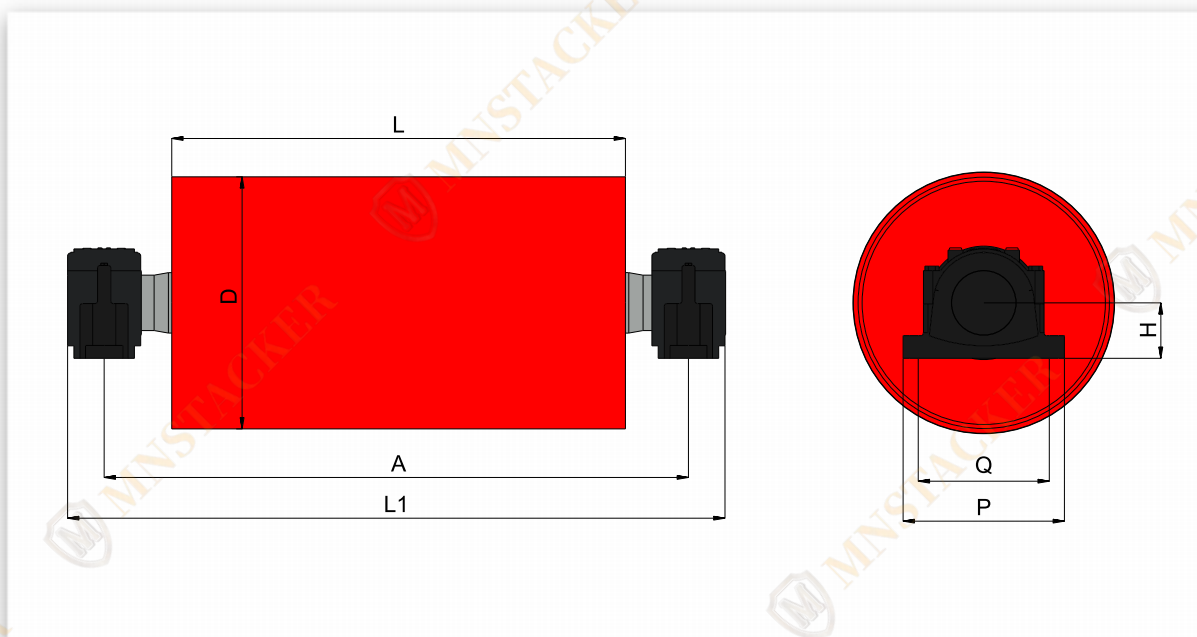
Belt Width	Dia.	Allowable Torque	Allowed combined force	A	L	L2	K	Q	P	H	
		KN · m	KN								
1000	1600	120	520	1650	1150	1025	470	940	1150	330	
		160	660	1800		1175	470	1010	1200	380	
1200	500	6.3	60	1750	1400	965	170	380	460	135	
	630	12	52			975	210	440	530	155	
		20	85	975	250	480	570	170			
	800	12	80	1750	1400	975	210	440	530	155	
		20	110			975	250	480	570	170	
		27	140	1850		1025	250	520	640	200	
		40	180			1035	300	570	700	220	
		52	230	1900		1120	350	640	780	240	
		1000	12	80		1750	1400	975	210	440	530
	20		110	975	250			480	570	170	
	27		160	1850	1025	250		520	640	200	
	40		210		1035	300		570	700	220	
	52		290	1900	1120	350		640	780	240	
	66		330		1150	350		720	880	270	
	1250	80	450	1900	1400	1150	350	750	900	290	
		52	320			1150	410	750	900	290	
		66	450			1150	410	840	1000	310	
		80	520				470	940	1150	330	
	1400	80	520	1900	1400	1150	410	840	1000	310	
		120	660			1150	470	940	1150	330	
		160	800			1300	470	1010	1200	380	
	1600	1600	120	660	1900	1400	1150	470	940	1150	330
			160	800	2050		1300	470	1010	1200	380
	1400	800	20	100	2050	1600	1125	250	480	570	170
27			130	1125			250	520	640	200	
40			170	1135			300	570	700	220	
52			210	2100	1220		350	640	780	240	
66			320		1220		350	720	880	270	
1000		20	100	2050	1125		250	480	570	170	
		27	160		1125		250	520	640	200	
		40	210		1135		300	570	700	220	
		52	260	2100	1220		350	640	780	240	
		66	300		1220		350	720	880	270	
		80	450		1250		350	750	900	290	
1250		52	260	2100	1250		350	750	900	290	
		66	450		1250		410	750	900	290	
		80	520		1260		410	840	1000	310	
		120	660		1260		470	940	1150	330	

Belt Width	Dia.	Allowable Torque	Allowed combined force	A	L	L2	K	Q	P	H		
		KN · m	KN									
1400	1400	80	520	2100	1600	1260	410	840	1000	310		
		120	800			1260	470	940	1150	330		
		160	1050	2250		1400	470	1010	1200	380		
	1600	120	800	2150		1285	470	940	1150	330		
		160	1050	2250		1400	470	1010	1200	380		
1600	800	20	120	2250	1800	1235	250	520	640	200		
		27	160			1245	300	570	700	220		
		40	240	2300		1330	350	640	780	240		
		52	320				350	720	880	270		
		66	450	2350		1375	350	750	900	290		
		1000	27	160		2250	1245	300	570	700	220	
	40		240	2300		1330	350	640	780	240		
	52		320				350	720	880	270		
	66		450	2350		1375	350	750	900	290		
	80		520	2350		1385	410	750	900	290		
	120		650			1385	410	840	1000	310		
	1250	66	450	2350		1800	1375	350	750	900	290	
		80	520				1385	410	750	900	290	
		120	650				1385	410	840	1000	310	
		160	800				1385	470	940	1150	330	
		1400	80				520	1385	410	840	1000	310
			120				800	1385	470	940	1150	330
	160		1050	2450		1500	470	1010	1200	380		
	1600	80	520	2350		1800	1385	410	840	1000	310	
		120	800				1385	470	940	1150	330	
		160	1200	2450			1500	470	1010	1200	380	
	1800	800	20	160		2450	2000	1335	250	520	640	200
			27	240				1345	300	570	700	220
			40	320		2500		1430	350	640	780	240
52			450	350	720				880	270		
66			520	2550	1475	350		750	900	290		
1000			40	320	2500	1430		350	640	780	240	
		52	450	350				720	880	270		
		66	520	2550	1475	350		750	900	290		
		80	650		1485	410		750	900	290		
		120	800		1485	410		840	1000	310		
		1250	66		450	1485		410	750	900	290	
80			520	1485	410	840		1000	310			
120			650	1485	470	940		1150	330			
1400		80	450	2550	1485	410		840	1000	310		
		120	800		1485	470		940	1150	330		

Belt Width	Dia.	Allowable Torque	Allowed combined force	A	L	L2	K	Q	P	H		
		KN · m	KN									
1800	1400	160	1050	2650	2000	1600	470	1010	1200	380		
	1600	120	800	2550		1485	470	940	1150	330		
		160	1050	2650		1600	470	1010	1200	380		
2000	800	20	160	2650	2200	1445	250	520	640	200		
		27	240			1455	300	570	700	220		
		40	320	2700		1520	350	640	780	240		
		52	450				350	720	880	270		
		66	520	2750		1575	350	750	900	290		
	1000	40	320	2700		1520	350	640	780	240		
		52	450				350	720	880	270		
		66	520	2750		1575	350	750	900	290		
		80	650			1585	410	750	900	290		
	1250	120	800	2750		1585	410	840	1000	310		
		66	450			1585	410	750	900	290		
		80	520			1585	410	840	1000	310		
	1400	120	800	2750		1585	470	940	1150	330		
		120	800			1585	410	840	1000	310		
		160	1200			2850	1700	470	1010	1200	380	
	1600	120	800	2750		1585	470	940	1150	330		
		160	1200	2850		1700	470	1010	1200	380		
	2200	800	27	240		2950	2500	1605	300	570	700	220
			40	320		3000		1670	350	640	780	240
			52	450		3000		1670	350	720	880	270
66			520	3050	1725	350		750	900	290		
1000		40	320	3000	1670	350		720	880	270		
		52	450	3050	1725	350		750	900	290		
		66	520		1735	410		750	900	290		
		80	650		1735	410		840	1000	310		
120		800	1735		470	940		1150	370			
1250		80	450	3050	1735	410		840	1000	310		
		120	800		1735	470		940	1150	330		
		160	1200		3150	1850		470	1010	1200	380	
1400		80	450	3050	1735	470		940	1150	330		
		120	800	3150	1850	470		1010	1200	380		
		160	1200	3200	1885	470		1050	1240	400		
		120	800	3150	1850	470		1010	1200	380		
1600	160	1200	3200	1885	470	1050	1240	400				
	160	1200	3200	1885	470	1050	1240	400				
2400	800	27	240	3250	2800	1755	300	570	700	220		
		40	320	3300		1820	350	640	780	240		
		52	450	3300		1820	350	720	880	270		

Belt Width	Dia.	Allowable Torque	Allowed combined force	A	L	L2	K	Q	P	H
		KN · m	KN							
2400	800	66	520	3350	2800	1875	350	750	900	290
	1000	40	320	3300		1820	350	720	880	270
		52	450	3350		1875	350	750	900	290
		66	520			1885	350	750	900	290
		80	650			1885	410	840	1000	310
		120	800			1885	470	940	1150	370
		1250	80			450	1885	410	840	1000
	120		800			1885	470	940	1150	330
	160		1200	3450		2000	470	1010	1200	380
	1400	80	450	3350		1885	470	940	1150	330
		120	800	3450		2000	470	1010	1200	380
		160	1200	3500		2035	470	1050	1240	400
	1600	120	800	3450		2000	470	1010	1200	380
		160	1200	3500		2035	470	1050	1240	400
	1800	120	800	3450		2000	470	1010	1200	380
		160	1200	3500		2035	470	1050	1240	400

1.3 Non-drive Pulley



Belt Width	Dia.	Allowable Torque KN	A	L	L1	Q	P	H			
400	200	8	750	500	830	260	320	90			
	250	8									
	315	10									
	400	16			860	280	340	100			
		24									
500	200	8	850	600	930	260	320	90			
	250	9									
	315	10									
	400	10			960	280	340	100			
		23									
	500	28			965	350	410	120			
49											
650	200	8	1000	750	1101	260	320	90			
	250	8									
	315	8			1110	280	340	100			
		16									
		26									
	400	20			1115	350	410	120			
		32									
		46									
		1139							380	460	135
		40							1115	350	410

Belt Width	Dia.	Allowable Torque KN	A	L	L1	Q	P	H
650	500	59	1000	750	1139	380	460	135
	630	59			1139	380	460	135
		70	1050		1201	440	530	155
800	200	6	1250	950	1330	260	320	90
	250	6			1339	280	340	100
	315	12			1344	350	410	120
		20	1300		1411	380	460	135
	400	29			1423	440	530	155
		45			1411	380	460	135
	500	40	1300		1423	440	530	155
		56			1433	480	570	170
		100			1411	380	460	135
	630	50	1300		1423	440	530	155
		73			1433	480	570	170
		100			1550	520	640	200
		170			1423	440	530	155
	800	90	1300		1433	480	570	170
		126			1550	520	640	200
		170			1566	570	700	220
		250			1550	520	640	200
	1000	240	1400		1566	570	700	220
		330			1644	640	780	240
		400			1644	720	880	270
	1250	400	1450		1734	750	900	290
		550			1740	750	900	290
		800						
	1000	250	6		1450	1150	1530	260
315		11	1539	280			340	100
		18	1544	350			410	120
400		18	1500	1544	350		410	120
		29		1611	380		460	135
45		1623		440	530		155	
500		35	1500	1611	380		460	135
		45		1623	440		530	155
		75		1633	480		570	170
630		43	1500	1611	380		460	135
		64		1623	440		530	155
		87		1633	480		570	170
		168		1750	520		640	200
800		79	1500	1623	440		530	155

Belt Width	Dia.	Allowable Torque KN	A	L	L1	Q	P	H	
1000	800	110	1500	1150	1633	480	570	170	
		168	1600		1750	520	640	200	
		220			1766	570	700	220	
		300	1650		1894	640	780	240	
	1000	130	1500		1633	480	570	170	
		200	1600		1750	520	640	200	
		290			1766	570	700	220	
		387	1650		1894	640	780	240	
		429			1894	720	880	270	
	1250	400	1650		1894	720	880	270	
		550			1934	750	900	290	
		660			1940	750	900	290	
		600			1934	750	900	290	
	1400	900			1940	840	1000	310	
		1200			1940	940	1150	330	
	1200	250	6		1700	1780	260	320	90
		315	11			1789	280	340	100
			17			1794	350	410	120
400		17	1750	1794		350	410	120	
		26		1861	380	460	135		
		38		1873	440	530	155		
500		30	1750	1861	380	460	135		
		41		1873	440	530	155		
		70		1883	480	570	170		
630		37	1750	1861	380	460	135		
		53		1873	440	530	155		
		90		1883	480	570	170		
		150		1850	2000	520	640	200	
800		64	1750	1873	440	530	155		
		100		1883	480	570	170		
		150	1850	2000	520	640	200		
		200		2016	570	700	220		
		230		2144	640	780	240		
1000		134	1750	1883	480	570	170		
		150	1850	2000	520	640	200		
		200		2016	570	700	220		
		351	1900	2144	640	780	240		
		391		2144	720	880	270		
		437		2184	750	900	290		
1250		400		2184	750	900	290		
		550		2190	750	900	290		

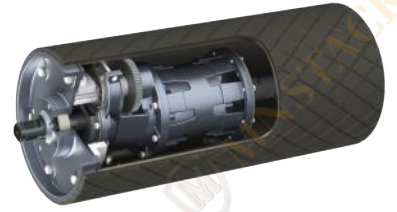
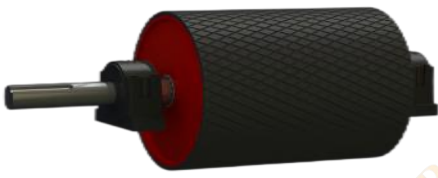
Belt Width	Dia.	Allowable Torque KN	A	L	L1	Q	P	H		
1200	1250	800	1900	1400	2190	840	1000	310		
	1400	900			2190	940	1150	330		
		1050	2050		2500	1010	1200	380		
	1600	1200								
1400	315	17	1900	1600	1994	350	410	120		
	400	17			1950	1994	350	410	120	
		25	2061			380	460	135		
		40	2073			440	530	155		
		500	25			1950	2089	380	460	135
	40		2073		440		530	155		
	66		2183		480		570	170		
	630	50	1950		2073	440	530	155		
			2050		2183	480	570	170		
					120	2200	520	640	200	
	800	50	1950		2073	440	530	155		
			2050		94	2183	480	570	170	
		150			2200	520	640	200		
		186			2216	570	700	220		
		214			2344	640	780	240		
		2100	300		2344	720	880	270		
			1000		100	2183	480	570	170	
					150	2200	520	640	200	
	236				2216	570	700	220		
	2100	331	2100		2344	640	780	240		
		361			2344	720	880	270		
		400			2384	750	900	290		
		427			2390	750	900	290		
		1250			400	2100	2384	750	900	290
					500		2390	750	900	290
					600			840	1000	310
	900		940		1150		330			
	1050	2250	2700		1010	1200	380			
	2100	600	2100		2390	840	1000	310		
		900			2390	940	1150	330		
		1050			2700	1010	1200	380		
	1200									
	2250	1600	2250		2726	1050	1240	400		
		1600								
	1600	400	25		2150	1800	2261	380	460	135
			40				2273	440	530	155
80			2383	480	570		170			
2150		40	2273	440	530		155			
		500	40	2150						

Belt Width	Dia.	Allowable Torque KN	A	L	L1	Q	P	H
1600	500	80	2250	1800	2383	480	570	170
		160			2400	520	640	200
	630	40	2150		2273	440	530	155
		80	2250		2383	480	570	170
		160			2400	520	640	200
		240	2300		2466	570	700	220
	800	40	2150		2273	440	530	155
		80	2250		2383	480	570	170
		120			2400	520	640	200
		160	2300		2416	570	700	220
		240			2544	640	780	240
		320			2544	720	880	270
		450	2350		2634	750	900	290
		1000	160		2250	2416	570	700
	240		2300		2544	640	780	240
	320				2544	720	880	270
	450		2350		2634	750	900	290
	520				2640	750	900	290
	800				2640	840	1000	310
	1250	450	2450		2640	750	900	290
		520			2640	840	1000	310
		800			2640	940	1150	330
		1200			2900	1010	1200	380
	1400	520	2350		2640	840	1000	310
		800			2640	940	1150	330
		1200			2900	1010	1200	380
	1600	800	2350		2640	940	1150	330
		1200			2900	1010	1200	380
		1600			2926	1050	1240	400
	1800	400	25		2350	2461	380	460
40			2473	440		530	155	
80			2583	480		570	170	
500		40	2350	2473	440	530	155	
		80	2450	2583	480	570	170	
		160		2600	520	640	200	
630		40	2350	2473	440	530	155	
		80	2450	2583	480	570	170	
		160		2600	520	640	200	
		240		2616	570	700	220	
		320	2500	2744	640	780	240	
800		80	2450	2583	480	570	170	

Belt Width	Dia.	Allowable Torque KN	A	L	L1	Q	P	H
1800	800	160	2450	2000	2616	570	700	220
		240	2500		2744	640	780	240
		320			2788	720	880	270
		450	2550		2840	750	900	290
	1000	160	2450		2616	570	700	220
		240	2500		2744	640	780	240
		450	2550		2834	750	900	290
		520			2840	750	900	290
		800			2840	840	1000	310
		520			2840	750	900	290
	1250	800	2650		2840	940	1150	330
		1200			3100	1010	1200	380
		800			2840	940	1150	330
	1400	800	2550		2840	940	1150	330
		1200	2650		3100	1010	1200	380
		1600			3126	1050	1240	400
		800	2550		2840	940	1150	330
	1600	1200	2650		3100	1010	1200	380
		1600			3126	1050	1240	400
2000	400	25	2550	2661	380	460	135	
		40		2673	440	530	155	
		80		2783	480	570	170	
	500	40	2550	2673	440	530	155	
		80	2650	2783	480	570	170	
		160		2800	520	640	200	
	630	40	2550	2673	440	530	155	
		80	2650	2800	520	640	200	
		160		2816	570	700	220	
		240	2700	2944	640	780	240	
	800	80	2650	2783	480	570	170	
		160		2816	570	700	220	
		240	2700	2944	640	780	240	
		320		2944	720	880	270	
		550	2750	3040	750	900	290	
		160	2650	2816	570	700	220	
	1000	240	2700	2944	640	780	240	
		320		2944	720	880	270	
		450	2750	3034	750	900	290	
		520		3040	750	900	290	
		650		3040	840	1000	310	
		520			750	900	290	
	1250	800	2750	3040	750	900	290	
		800		940	1150	330		

Belt Width	Dia.	Allowable Torque KN	A	L	L1	Q	P	H
2000	1250	1200	2850	2200	3300	1010	1200	380
		800	2750		3040	940	1150	330
	1400	1200	2850		3300	1010	1200	380
		1600			3326	1050	1240	400
		800			3300	1010	1200	380
	1600	1200	3326		1050	1240	400	
		1600	3334		1090	1280	420	
		40	2850		2973	440	530	155
	500	80	2950		3083	480	570	170
120		3100		520	640	200		
40		2850		2973	440	530	155	
630	80	2950	3100	520	640	200		
	160		3116	570	700	220		
	240		3244	640	780	240		
	90	2950	3083	480	570	170		
	150		3116	570	700	220		
	240		3244	640	780	240		
800	320	3000	3244	720	880	270		
	450		3050	3334	750	900	290	
	600	3340		750	900	290		
	180	2950		3116	570	700	220	
	1000	240	3000	3244	640	780	240	
320		3244		720	880	270		
450		3050	3334	750	900	290		
600			3340	750	900	290		
800			3340	940	1150	330		
1200			3600	1010	1200	380		
400			3050	3334	750	900	290	
800	3340	940		1150	330			
1200	3600	1010		1200	380			
1500		1050	1240	400				
800		1010	1200	380				
1400		1200	1050	1240	400			
		1500	1090	1280	420			
	800	960	1150	370				
1600	1200	3150	1050	1240	400			
	1500		1090	1280	420			
	40		3150	3273	440	530	155	
2400	500	80	3250	2800	3383	480	570	170
		160			3400	520	640	200
		240			3416	570	700	220
		40			3150	3273	440	530

Belt Width	Dia.	Allowable Torque KN	A	L	L1	Q	P	H
2400	630	80	3250	2800	3383	480	570	170
		160			3416	570	700	220
		240	3300		3544	640	780	240
		320			3544	720	880	270
	800	150	3250		3416	570	700	220
		240	3300		3544	640	780	240
		320			3544	720	880	270
		450	3350		3634	750	900	290
		600			3640	750	900	290
	1000	240	3300		3544	640	780	240
		450	3350		3634	750	990	290
		600			3640	750	900	290
		800			3640	840	1000	310
		1000			3640	940	1150	330
		1200			3450	3900	1010	1200
	800	3350			3640	940	1150	330
	1250	1200	3450		3900	1010	1200	380
		1500			3926	1050	1240	400
		800			3900	1010	1200	380
	1400	1200	3450		3926	1050	1240	400
		1500			3934	1090	1280	420
		800			3900	1010	1200	380
	1600	1200	3450		3926	1050	1240	400
		1500			3934	1090	1280	420
1200		3926		1050	1240	400		
1800	1500	3450	3934	1090	1280	420		
	1200		3926	1050	1240	400		



Leading manufacturer for conveyor components

Phone: +86 18916089629

WhatsApp: +8618916089629

Website: www.mnstacker.com

Email: info@mnstacker